



Type: Switch - Transmission - Hardware

Item Code: GU-HW-ACSW08D

EAN CODE: 4260573065035

SMART

The SMART product line offers comprehensive coverage of modern video systems with advanced AI analysis and solutions for various application areas.

Highlights

Continuous operation



This Grundig Security device is capable of operating 24/7 continuously on any day.

"Lite" managed SMART-Line Switches

The 8 or 16 channel network switches of the SMART Line belong to the category of "lite-managed" switches, which means that they allow some control and configuration, but not as comprehensive as full-fledged managed switches. With the MS-Windows® software GVMS (GU-SW-VMS), various functions can be used to manage the devices, which increases flexibility and control over the network.

- **PoE Control:** Power over Ethernet (PoE) power can be turned on or off individually on each individual port to restart cameras or enable power on the ports where it is needed.
 - **Port Mirroring:** This function makes it possible to mirror the data traffic of one port to another port. This is useful for monitoring and troubleshooting because you can analyze all traffic from a specific port on another port.
 - **VLAN configuration:** It is possible to set up VLANs (Virtual Local Area Networks) on the ports or create VLAN groups. This allows the network to be divided into different logical segments to isolate traffic and improve security and management.
- These features provide a basic and useful way to efficiently manage and optimize the network.

Features

- PoE network switch, providing 8 × PoE ports and 1 × 100/1000 RJ45 ports. On top of high-performance access, the switch provides advanced PoE power technology to guarantee the stable network upload of the adaptive data.
- 4 KV surge protection for PoE ports
- Up to 250 m Long Range PoE Transmission. The distance between IP-cameras and switch can reach maximum 300 meters.
- NDAA compliant

Smart Line

In addition to the usual reliability, the SMART product line from GRUNDIG Security offers numerous image analysis functions, supported by artificial intelligence (AI). For example, use the LPR function to recognize license plates or facial recognition to identify people. Or reduce the number of false alarms by classifying objects as 'Vehicle', 'Person' or 'Other'. GRUNDIG Security's SMART cameras are able to detect people in crowds, count the number of heads and measure the length of queues, e.g. B. to be determined in the checkout area. In this way, they help you to use your resources optimally. They also inform you if unauthorized people cross predefined lines or enter certain areas.

Specifications GU-HW-ACSW08D

General

PoE Specification:	802.3af/at (PSE)
Switch Throughput:	3.6 Gbps
Accessories included:	Power Adapter

Network

Bit Rate:	uplink/downlink rate 1000 Mbps
Internal Cache:	4.1 Mbits
Packet Forwarding Rate:	2.6 Mpps

I/O Interface

ISO Standard:	802.3802.3x802.3u802.3az
PoE Budget:	65 W
Interfaces:	8x 10/100M PoE + 1x 100/1000M

Environmental

Operating Temperature:	0 °C ~ +40 °C
Operating Humidity:	10% ~ 90%, non-condensing

Electrical

Max power Output per Port:	30 W max. (individual Port)
Supply Voltage:	48 VDC, Power Adapter 100 ~ 240 VAC 50, 60Hz included
Power Consumption:	Max. 72 W

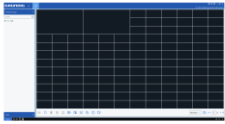
Mechanical

Material:	Metal
Dimensions:	173 x 82 x 30 mm (6.8 x 3.2 x 1.2 inch)
Weight:	380 g (0.84 lb)

Packaging

Package Dimensions:	210 x 110 x 85 mm (8.3 x 4.3 x 3.4 inch)
Package Weight:	800 g (1.8 lbs)
Packaging Unit:	18
Bulk Package Dimensions:	430 x 350 x 290 mm (16.9 x 13.8 x 11.4 inch)
Bulk Package Weight:	15300 g (33.7 lbs)

Accessories



GU-SW-VMS